

THE PATTERN AND REALIZATION OF ZIGBEE -WI-FI WIRELESS PATHWAY

P.Sasi Kala¹, K.Nishakar²

¹Assistant Professor, Department Of ECE, Abhinav Hi-tech College Of Engg, Hyderabad, India.kala.smile@gmail.com

²Associate Professor, Department Of ECE, Vidhya Vikas Institute of Technology, Hyderabad, India

Abstract

The application of WSN/ZigBee is having enormous growth and how to connect WSN/ZigBee to the present standard network seamlessly is an issue what is worth studying. In this paper, it patters and realizes a ZigBee—Wi-Fi wireless pathway based on STM32W108 RF chip and embedded Wi-Fi module. In ZigBee network, wireless pathway as a sink, it receives information from sensor nodes and interacts with them. In WLAN, wireless pathway communicates with PC or network servers by means of AP. Both the hardware scheme and software scheme of the wireless gateway are introduced. Then the performance of the wireless pathway is tested, and the result shows that it can be used for general purposes and the performance is stable. The wireless pathway can realize communication effectively between ZigBee network and WLAN.

Index Terms: STM32W108, ZigBee, WI-Fi, Wireless gateway

1. INTRODUCTION

A wireless sensor network (WSN) consists of a number of distributed devices using sensors to cooperatively monitor physical or environmental conditions, such as temperature, sound, vibration or pressure at different locations. ZigBee is a new IEEE802.15.4 standards-based, short distance, low-data rate and low-power consumption wireless communication technology. Moreover, ZigBee specification has better compatibility between versions from earliest ZigBee 1.0, ZigBee 1.1 to ZigBee 2007/PRO. With the constantly improving and maturing of ZigBee technology, it is widely used in WSN. Wi-Fi is a most successful wireless local area network (WLAN) system that builds upon the IEEE 802.11 standards. With the rapid development of Wi-Fi in recent years, infrastructure facilities have been improved. What's more, the coverage of wireless access points (AP) has already been very wide and the price is cheap. Usually, the bandwidth of WLAN is higher than the bandwidth of other types of internet connection such as ADSL, GPRS and 3G and the transmission delay of WLAN is less than theirs. In this paper, a small in size, low-power, low-price and lightweight ZigBee—Wi-Fi wireless gateway is introduced. It contains two functions. For one thing, in wireless sensor network based on ZigBee (it is called ZigBee network for short), terminal sensor nodes and route sensor nodes are responsible for collecting and processing data. They will employ ZigBee technology to communicate with wireless pathway. The wireless gateway encapsulates the data that received from ZigBee network according to a certain format and transmits them to Wi-Fi module. For another, Wi-Fi module sends data to monitoring software on PC by means of AP. In addition, the Wi-Fi module

sends commands from PC to ZigBee network. Fig. 1 displays the system operation model.

2. MODEL OF HARDWARE

The hardware platform of wireless pathway is made up of two parts: the RF chip STM32W108 that integrates a 2.4 GHz, IEEE 802.15.4-compliant transceiver and 32-bit ARM® Cortex™-M3 microprocessor and EMW-380 Wi-Fi module. The structure is demonstrated in Fig. 2.

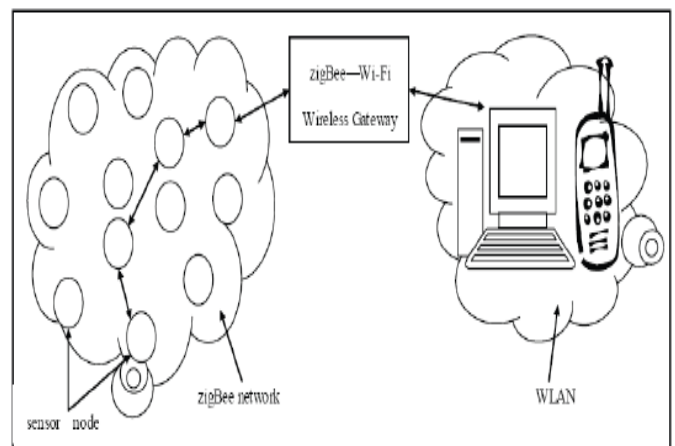


Fig-1.communication model between Zig Bee and Network

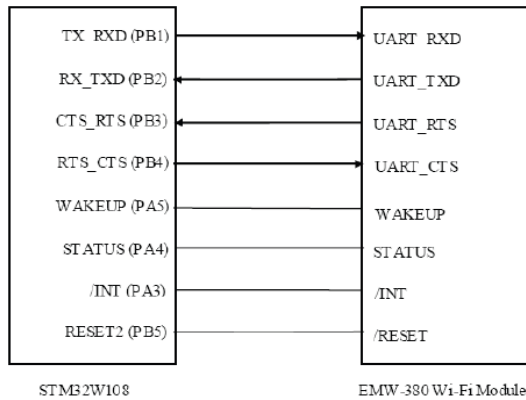


Fig-2. Hardware of Wireless Gateway

2.1. STM32W108

STM32W108 is a fully integrated System-on-Chip (SOC) launched by STMicroelectronics recently. It has 128 Kbytes of embedded Flash memory, 8Kbytes of integrated RAM memory for data and program storage and peripherals (like USART, SPI, TWI, ADC, general-purpose timers and 24 GPIOs) of use to designers of ZigBee-based systems. The processor can be operated at 12 MHz or 24 MHz when using the crystal oscillator, or at 6 MHz or 12 MHz when using the integrated high frequency RC oscillator. The difference between STM32W108 and other 2.4GHz SOC chips are as follows:

- (1) STM32W108 adopts 32-bit ARM® Cortex™-M3 processor, which can improve processing performance based on lower power consumption.
- (2) It supports for external power amplifier and the output power is up to +7dBm.
- (3) Different types of STM32W108 solidify different protocol stacks such as 802.15.4 MAC Ember Net ZigBee PRO and ZigBee RF4CE Users do not have to understand the network protocol development and they can directly exploit wireless networking products that comply with the relevant standards, which can greatly simplify the development of the technical complexity products and shorten time to market. In this paper, the type of STM32W108 used integrates Ember Net ZigBee PRO Stack. Meanwhile, STM32W108 is responsible for wireless communication between wireless gateway and ZigBee sensor nodes.

2.2. EMW-380 Wi-Fi Module

The wireless gateway adopts EMW-380 Wi-Fi module to realize the WLAN capabilities. It is an embedded Wi-Fi (802.11b/g) applicable module. The hardware is composed of ARM processor and Wi-Fi RF chip. The software integrates some network protocols such as Wi-Fi, TCP/IP, UDP, and DHCP. The module provides an SPI/UART interface to connect with MCU. A simple API command set is provided to implement link layer data services based on 802.3 frame formats. The module

supports AP and Ad-Hoc, RF channel automatic choice and WEP encryption, which is suitable for small system with standard Wi-Fi access.

3. SOFTWARE DESIGN

The software architecture of the wireless gateway includes System control, software design of EMW-380 Wi-Fi module, software design of STM32W108 and wireless gateway application layer protocol. The software architecture is shown in Fig.3 System control regulates hardware and application layer protocol of the wireless gateway.

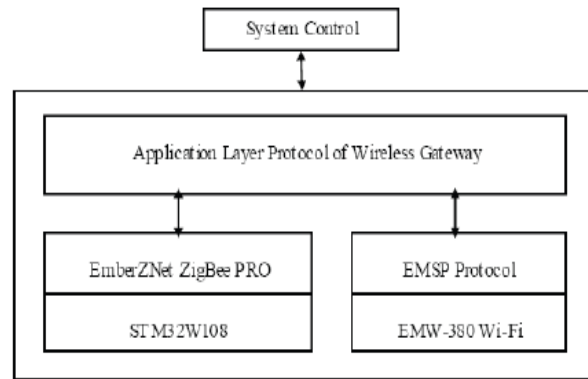


Fig3. Software Structure of Wireless gateway

Table1. EMSP Protocol Format

Protocol head				Data field	
command	length	result	head checksum	data	data checksum

3.1 EMW-380 Wi-Fi Module Design

EMW-380 Wi-Fi module communicates with STM32W108 through UART and EMSP protocol. And the EMSP protocol has nothing to do with the physical connection. The module has two operative modes: configuration mode and data transparent transmission mode. In the configuration mode, all the work is controlled by EMSP command. In the data transparent transmission mode, module encapsulates the received data into TCP/UDP packets and sends them to remote end. Furthermore, it can send the TCP/UDP packets that come from remote end to STM32W108. The data packet format of EMSP protocol is shown in Table1. It contains a protocol head (8 Bytes) and data field (maximum is 256 Bytes).As shown in Table 1, all the request and response commands are checked to ensure the integrity and reliability. The EMSP protocol consists of 12 commands to implement module control, network control and network communication.

3.2. STM32W108 Design

From the point of ZigBee network, the wireless gateway is a sink and gathers all kinds of data from sensor nodes. The Ember Net ZigBee PRO provides users with a standard networking API based on the ZigBee specification across the STM32W108 platforms. Users can just learn how to use API functions on the application layer, and then can develop own projects. Due to increasing flexibility and reliability of EmberZNet ZigBee PRO Stack, it supports three types of mesh network topologies. star network, full mesh network and hybrid mesh network. Aiming at the application design of the wireless gateway, hybrid mesh network is used. The stack mentioned above allows users to create own wireless personal area network (WPAN). The basic functions of stack contain network organization, route discovery, routing, device discovery, message relay and security. Under the application layer of protocol stack is followed by transport layer, application support layer, and network Routing and discovery, MAC and RF abstraction layer. Physical RF and medium access provide hardware support for software design.

3.3. Application Layer Protocol of The Wireless Gateway Design

The application layer of wireless gateway software design is described in Fig. 4.

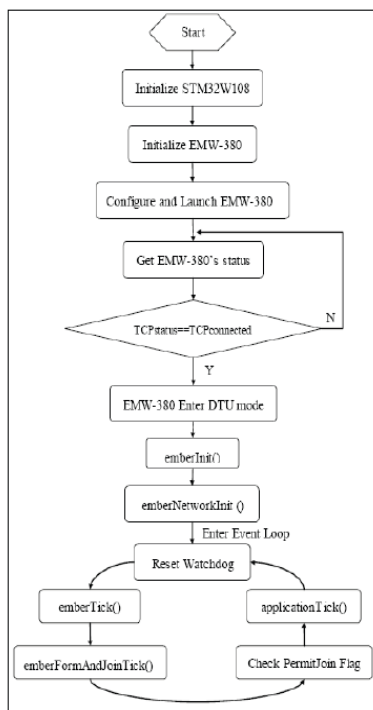


Fig.4-Application layer protocol wireless gateway software design

When initializing STM32W108, INTERRUPTS_ON() And halInit() are used to configure clock, open system Timer, and

turn on interruptions. EM380C_fast_Init(BAUDRATE) provided by EMSP protocol API set can configure the interface between STM32W108 and EMW-380 Wi-Fi module. It will take about 1-2 seconds to completely initialize the module, and then it will respond to the request sent by STM32W108. STM32W108 can query the /INT pin of EMW-380 Wi-Fi module to determine whether the initialization is complete. After finishing initialization, /INT changes from high to low. EM380C_Set_Config(&parms) can set the configuration parameters of the module. And it will launch the module when using EM380C_Startup() function. Once the module has connected to monitoring software on PC as a client, it will enter into transparent data transfer operative mode. Then the module can send the data received from STM32W108 to monitoring software. Besides, the module will send the commands from monitoring software to STM32W108.

After finishing the work of EMW-380 Wi-Fi module, calling ember nit() can complete the initialization of Ember Net ZigBee PRO Stack and RF module. The network initialization is done by emberNetworkInit(). Furthermore, the address table also should be initialized. After entering into event loop, emberFormAndJoinTick () function can form network according to the given network parameters and join in it. And then the permit joining flag becomes TRUE. The application Tick() function offers some services: (1) checking timeout, (2) sending a route request packet that creates routes from every node in ZigBee network back to wireless gateway, (3) calling sink Advertise() to send multicast message, (4) detecting whether it have received data from EMW-380 Wi-Fi, (5) updating the address table, (6) setting the time permitted join in network.

Of course, the wireless gateway plays an important role in the communication model between ZigBee network and WLAN. On the side of ZigBee network, the wireless gateway takes charge of processing data on the application layer. NWK and MAC layers are managed by EmberZNet ZigBee PRO Stack while STM32W108 handles with PHY layer. From the point of view of WLAN, wireless gateway also deals with data on the application layer and other layers like TCP/IP, 802.11 MAC and 802.11 PHY are regulated by EMW-380 Wi-Fi module. There are two directions of data communication in communication model between ZigBee network and WLAN.

3.4 Data from Zigbee Network to Wlan

In the ZigBee network, after establishing a network by wireless gateway, sensor nodes join in the network within the time that wireless gateway permits. When the time expires, sensor nodes can't join in the network anymore unless the button is pressed on route sensor nodes and then the permit joining flag becomes TRUE again. But if the sensor node is the terminal node, it can't allow other nodes to join in the network through itself. So the size of the network can be dynamically changed, and the extensibility of ZigBee network is good. Every node has a

unique NodeID assigned by wireless gateway once join process has completed. After interacting with wireless gateway as shown in Fig.5, sensor nodes begin to send data to wireless gateway.

SINK_ADVERTISE is sent regularly, and the time interval can be set by users. And they will record each other's MAC address and NodeID in their address tables before exchanging data. This interaction procedure can ensure that the data that sensor nodes send to wireless gateway is correct and integral. When the sensor node is a sleep node, it will enter into power save mode once it is idle. If the sleep node misses the SINK_ADVERTISE sent by wireless gateway, it can send SINK_QUERY message to wireless gateway asking for SINK_ADVERTISE and then start to send data to wireless gateway after finishing the interaction procedure in Fig. 5.

When wireless gateway receives data from ZigBee network, it will parse data in terms of the type of monitoring data in application layer. And then it again packages the monitoring data according to the format in Table 2. The start fields of data from ZigBee network to WLAN are 0x7E and 0x42 and the end field is 0x7E. The Payload data contain MSG_HEADER and MSG_DATA. MSG_HEADER consists of the length of MSG_DATA, MAC frame control field, destination PAN identifier, destination address, data type (data, command, data response or command response) and the group information of sensor nodes. MSG_DATA includes NodeID and monitoring data while monitoring data will vary with different applications. The check field is CCS checksum, which is used to judge whether the data are correct. TCP/IP protocol embedded within EMW-380 Wi-Fi module encapsulates the data that are from application layer of wireless gateway. Then in transparent transmission mode, it sends the encapsulated data to WLAN. The monitoring software processes the received data and feedback to the users.

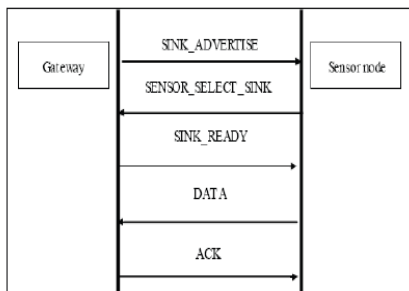


Fig-5.Communication procedure between sensor node and wireless gateway

3.5 Data from Wlan to Zigbee Network

The way of transmitting data from WLAN to ZigBee network is almost the same. The data from the WLAN is first transmitted to EMW-380 Wi-Fi module. It extracts the data from the TCP packet, and transmits them to the application layer of wireless

gateway. The application layer of wireless gateway parses the data according to the format in Table 2, and hands over the data to Ember Net ZigBee PRO Stack. The stack will assemble them to IEEE 802.15.4 frame and send to destination node in ZigBee network. The process includes the routing of the network, so that the data sent to the specified node by the WLAN always reach the destination correctly. Besides, the node is identified by the NodeID. When the node receives data, then it handles with them further.

4. RESULTS

In this section, result are discussed. Hardware test environment includes wireless gateway, TP-LINK TL-WN322G+ 54Mbps wireless USB network card, PC, several sensor nodes, network sniffer produced by Mxchip Company and a network protocol analyzer for UNIX and Windows called Wire shark.

4.1 Functional Test

Firstly, the function of wireless gateway is tested. As shown in Fig. 6, the monitoring software on PC is a server and its IP address is 192.168.4.7. While the IP address of wireless gateway is 192.168.4.53 and it is a client. While the Wire shark software can capture the data packet that wireless gateway sends to monitoring software.

Node Id	Temp	Humi	LS	Light	Time
0	NULL	NULL	NULL	0x0	18:47:19 2010/10/09
26481	NULL	NULL	205	0x000	18:47:19 2010/10/09
40212	NULL	NULL	0	0x0	18:47:06 2010/10/09
64043	27°C	57	NULL	0x0	18:47:16 2010/10/09
11153	27°C	58	NULL	0x0	18:47:09 2010/10/09
54192	27°C	59	NULL	0x000	18:47:19 2010/10/09
37554	NULL	NULL	112	0x0	18:47:19 2010/10/09

Fig.6- information shown by monitoring software

For example, the data that wireless gateway send to monitoring software are 7E 42 0C 00 00 2B 00 FF 00 FF 11 00 71 67 00 00 00 00 FF FF FF FF FF FF CD 00 00 00 58 A7 7E. Among the 31 Bytes data, CD and 00 are just light intensity value 0x00CD measured by sensor node. Its NodeID is 26481. Comparing 0x00CD with the data of ZigBee network layer packet that captured by network sniffer, the result is that they are same. The decimal number of 0x00CD is 205 and it can be seen from Fig. 6.

4.2 Performance Test

1). Test scenario 1

Sensor nodes distribute randomly around the wireless gateway. The rule is that each node sends only 1000 data packets to wireless gateway and then stop. The length of each packet is 82 Bytes, which is the maximum packet load length that users used

on application layer. As Fig. 7 described, x-axis denotes the number of nodes in ZigBee network and y-axis represents the average packet loss rate (PLR) of wireless gateway. The four curves respectively show the change of PLR when the time interval of sending data is 80ms (millisecond), 100ms, 120ms or 200ms. In the above four cases, ten tests are done respectively. So the PLR is an average value of the ten tests. As the time interval increases, PLR drops. If the time interval of sending a data packet is 1 second and there are 8 sensor nodes in the ZigBee network, the PLR of wireless gateway drops to 0%.

The reason why PLR varies with the time interval of sending data packet is that PLR depends on three factors: the number of sensor nodes (N) in ZigBee network, the time interval of sending data packet (T) and the length of data packet (L). When N and L remain the same and T gets smaller, the number of packet sent to the air per second increases, and then the collision probability (P) raises when sending data packet. Although there is data

Retransmission mechanism in EmberZNet ZigBee RPO Stack and retransmission number is up to 3, the consecutive collision probability that is P³ would be substantially increased. Therefore, when time interval grows, P gets smaller and PLR falls dramatically. So T is an important influential factor to PLR.

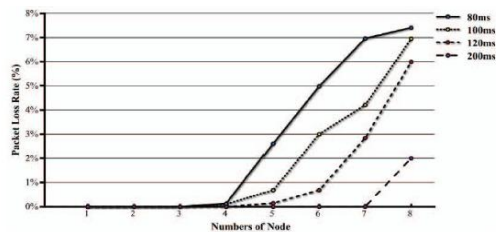


Fig 7. Data loss rate changes when different time interval used

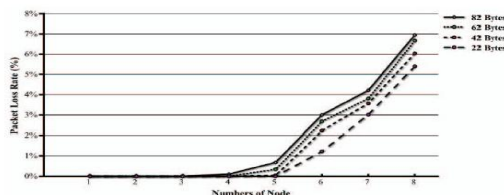


Fig-8 Data loss rate changes when the length of packet varies

CONCLUSIONS

In this paper, the ZigBee—Wi-Fi wireless pathway based on STM32W108 RF chip and EMW-380 Wi-Fi module can connect the ZigBee network to standard network seamlessly. From the result of performance test we can see that the performance and stability of wireless gateway suits the usual target of WSN application, which is low real time demand, small amount of data transmission and low bandwidth. As applications expansion of WSN, further research can focus on: the low power design of

wireless gateway, using wireless gateway ID to identify different deployment environments and adopting embedded Web Server technology enables users to visit different WSNs information.

REFERENCES

- [1]. David Culler, Deborah Estrin, Mani Sivasubrama, "Overview of sensor networks", IEEE Computer Society, August 2004.
- [2] ZigBee Alliance, Latest ZigBee specification including the PRO feature set. <http://www.zigbee.org>, 2005.
- [3] Hong-jiang He, Zhu-qiang Yue, and Xiao-jie Wang, "Design and realization of wireless sensor network gateway based on ZigBee and GPRS," Int. Conf. Inf. Comput. Sci., ICIC. Manchester, United kingdom: IEEE Computer Society, 2009, pp.196-199.
- [4] Cai Hao, Feng Renjian, and Wan Jiangwen, Wireless sensor network gateway with multi-communication methods [J]. Chinese Journal of Sensor and Actuators. 2008, 21(1):169-172.
- [5] Ali.Khdir.M, Owens.Thomas J, "Access mechanisms in Wi-Fi networks state of art, flaws and proposed solutions", ICT: Int. Conf. Telecommun. Doha, Qatar: IEEE Computer Society, 2010, pp.280-287.
- [6] STMicroelectronics, STM32W108HB STM32W108CB DataSheet. <http://www.st.com/mcu>, 2010.
- [7]. Ghasemi Abdorasoul, Razavizadeh S. Mohammad, "A simple MAC protocol for cognitive wireless networks", IEICE Trans Commun. Vol E92-B, pp. 3693-3700, 2009.
- [8] STMicroelectronics, UM0923 User manual EmberZNet™ application developer guide. <http://www.st.com/mcu>, 2010.
- [9] Shon.Taeshik and Park Yongsuk, "Implementation of RF4CE-Based Wireless Auto Configuration Architecture for Ubiquitous Smart Home", CISIS - Int. Conf. Complex, Intelligent Softw. Intensive Sys. Krakow, Poland: IEEE Computer Society, 2010, pp.779-783.
- [10] Mixchip, EMW-380_RM01040141.pdf. <http://www.mxchip.com>, 2009.
- [11] I.Akyildiz, X. Wang, W. Wang, "Wireless mesh networks: a survey", Computer Networks 47(4), 2005, pp.445-487.
- [12] Xu Xiaotao and Wu Yanlin, Technology and Application of Wireless Personal Area Network (WPAN) . Beijing: Posts&Telecom press, 2009.